



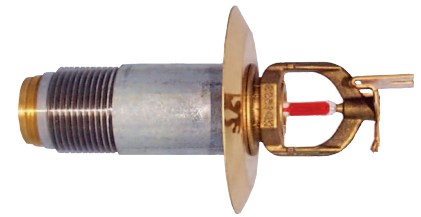
**AUTOMATIC SPRINKLERS
GL SERIES
DRY TYPE
HORIZONTAL SIDEWALL
RECESSED HORIZONTAL SIDEWALL**

DESCRIPTION AND OPERATION

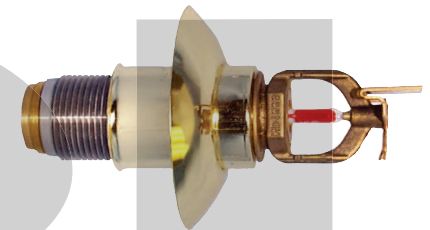
The Globe GL Series Dry Type Horizontal Sidewall Sprinkler is designed for use in special applications such as freezing environments and conditions where sediment or foreign materials might accumulate in ordinary horizontal pipe nipples.

The Globe GL Series Dry Type Horizontal Sidewall Sprinkler utilizes a frangible glass ampule sprinkler. At the ampule's rated temperature, the sprinkler opens releasing the bulb seat, causing the inner tube assembly to move, allowing the spring assembly to pivot alongside the inner tube. At this time, water flows through the sprinkler and is distributed by the deflector, in an approved discharge pattern.

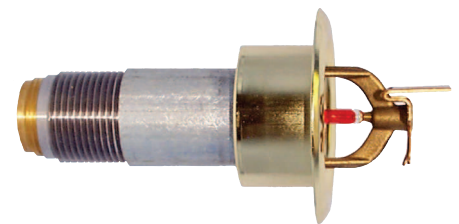
The heart of Globe's GL Series sprinkler proven actuating assembly is a hermetically sealed frangible glass ampule that contains a precisely measured amount of fluid. When heat is absorbed, the liquid within the bulb expands increasing the internal pressure. At the prescribed temperature the internal pressure within the ampule exceeds the strength of the glass causing the glass to shatter. This results in water discharge which is distributed in an approved pattern.



DRY NON-ADJUSTABLE
HORIZONTAL SIDEWALL



DRY SLEEVE & SKIRT
HORIZONTAL SIDEWALL



DRY RECESSED
HORIZONTAL
SIDEWALL

TECHNICAL DATA

- See reverse side for Approvals and Specifications.
- Temperature Ratings - 135°F (57°C), 155°F (68°C), 175°F (79°C), 200°F (93°C), 286°F (141°C).
- Water Working Pressure Rating - 175 psi (12 Bars).
- Factory tested hydrostatically to 500 psi (34 Bars).
- Maximum low temperature glass bulb rating is -67°F (-55°C).
- Frame - bronze • Deflector - brass • Screw - brass
- Bulb seat - brass • Spring - teflon coated nickel alloy
- Retainer - brass • Pin - stainless steel • Torsion spring - stainless steel
- Bulb - glass with glycerin solution, 5mm • Orifice insert - brass
- 3/4" or 1" NPT • Outer tube - galvanized steel pipe
- Inner tube - stainless steel

• SPRINKLER TEMPERATURE RATING/CLASSIFICATION and COLOR CODING

CLASSIFICATION	AVAILABLE SPRINKLER TEMPERATURES		BULB COLOR	N.F.P.A. MAXIMUM CEILING TEMPERATURE	
	135°F/155°F	57°C/68°C		100°F	38°C
ORDINARY	135°F/155°F	57°C/68°C	ORANGE/RED	100°F	38°C
INTERMEDIATE	175°F/200°F	79°C/93°C	YELLOW/GREEN	150°F	66°C
HIGH	286°F	141°C	BLUE	225°F	107°C

SPECIFICATIONS

NOMINAL "K" FACTOR		THREAD SIZE	LENGTH	FINISHES
5.6	(80 metric)	3/4" or 1" NPT	cULus Variable to 48"	Factory Bronze Satin Chrome ¹ Bright Chrome White Polyester Black Polyester
8.1	(116 metric)	1" NPT	FM Variable to 36"	Lead Coated ¹ Wax Coated ¹ Wax Over Lead ¹

NOTE: Metric conversions are approximate.
cULus listed corrosion resistant: Polyester must be specified on order.

¹Finishes available on special order;
Wax Coating cULus listed up to 200°F

APPROVALS

STYLE	SIN MODEL	K FACTOR	THREAD SIZE	135°F 57°C	155°F 68°C	175°F 79°C	200°F 93°C	286°F 141°C	cULus	* FM	NYC - DOB MEA 101-92-E
HORIZONTAL SIDEWALL	GL5685 ^a	5.6	1" NPT	X	X	X	X	X	X	X	X
	GL5686 ^a	5.6	3/4" NPT	X	X	X	X	X	X	-	X
	GL8185 ^b	8.1	1" NPT	X	X	X	X	X	X	-	X
RECESSED HORIZONTAL SIDEWALL	GL5685 ^a	5.6	1" NPT	X	X	X	X	X	X	X	X
	GL5686 ^a	5.6	3/4" NPT	X	X	X	X	X	X	-	X
	GL8185 ^b	8.1	1" NPT	X	X	X	X	X	X	-	X

NOTE:

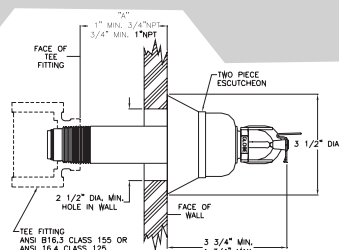
^alisted for light hazard only with deflector from 4" to 12" below the ceiling.

^blisted for light and ordinary hazard with deflector from 4" to 12" below the ceiling.

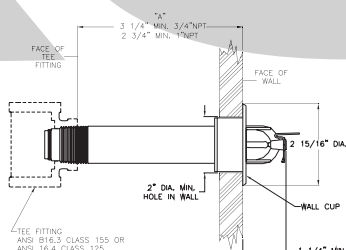
^cDry Horizontal Sidewall - FM Approved 155°F, 200°F, and 286° only.

^dDry Recessed Horizontal Sidewall - FM Approved 155°F and 200°F only.

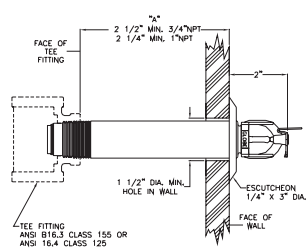
CROSS SECTIONS



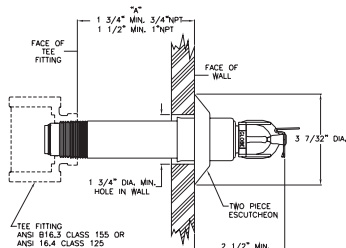
**EXTENDED
HORIZONTAL SIDEWALL**



**RECESSED
HORIZONTAL SIDEWALL**



**NON-ADJUSTABLE
HORIZONTAL SIDEWALL**



**SLEEVE & SKIRT
HORIZONTAL SIDEWALL**

IMPORTANT INSTALLATION DATA

Globe GL Series Dry Horizontal Sidewall sprinklers should be installed in accordance with the requirements set forth in NFPA 13. These sprinklers are to be installed using a pipe wrench applied to the outer tube. When this is not possible, the proper sprinkler head wrench may be used with extreme care for lengths up to approximately 18". Excessive force may distort the frame thus destroying the unit.

When installed in a wet system extending into a freezing area see chart on Dry Caution sheet for minimum exposed barrel length to prevent ice plugs. Please refer to our Dry Caution sheet for further important installation data.

**ORDERING INFORMATION
SPECIFY**

- Quantity ● Model Number ● Style
- Orifice ● Temperature ● Finishes desired
- Quantity - Wrenches - P/N 333010
- Quantity - Recessed Wrenches - P/N 337014
- Quantity - Protective Caps - P/N 327109-CAP (Friction Fit Recessed) ● Escutcheons desired
- "A" Dimension - Distance from face of fitting to the finished ceiling line regardless of escutcheon used.

GLOBE® PRODUCT WARRANTY

Globe agrees to repair or replace any of its own manufactured products found to be defective in material or workmanship for a period of one year from date of shipment.

For specific details of our warranty please refer to Price List Terms and Conditions of Sale (Our Price List).