



Revision Date: December,2013

Grooved mechanical tee
GMGThreaded mechanical tee(BSPT)
GMD

Threaded and Grooved Mechanical Tee

Mechanical tee may be used for any tee connection where a threaded or grooved outlet is headed.

Size available:

Grooved mechanical tee 2"X 1¼" ~ 8"X3";

Threaded mechanical tee 2"x1¼" ~ 6"x2½"

Working pressure: 300PSI/2.5MPA

MATERIAL SPECIFICATIONS

●Housing:

Ductile iron conform to ASTM A536 65-45-12

●Coating:

- Dacromet
- Red paint(RAL 3000)

●Rubber gasket:

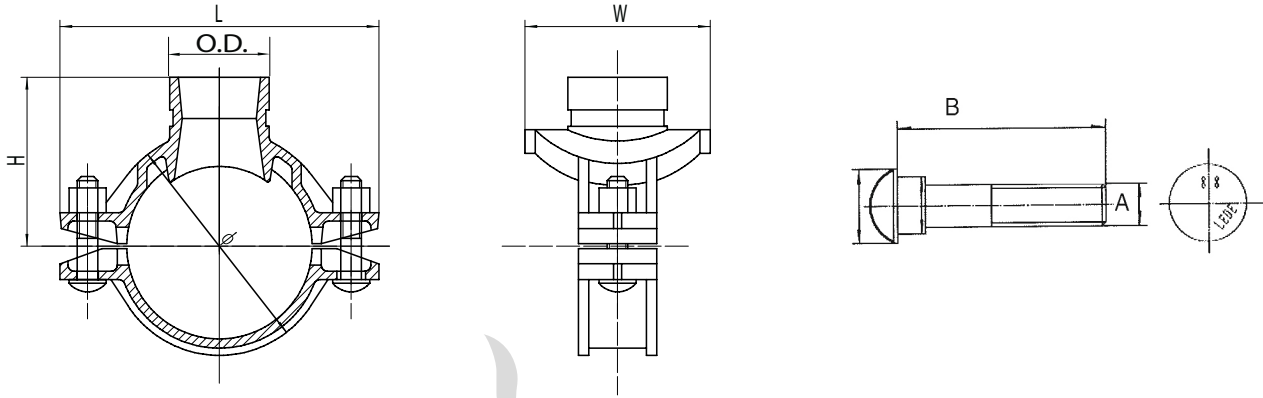
EPDM gaskets dispose of the international certifications and have undergone the aging test at 110°C(230°F) during a period of 45 days(1080 hours).Moreover, the gaskets have undergone the frozen test at -40°C(-40°F) during a period of 4 days (96 hours).

Working temperature gaskets: -34°C – 110°C (-29°F - 230°F)

●Bolts & Nuts:

Medium Carbon Steel

Dimensions



**GROOVED MECHANICAL TEE
GMG**

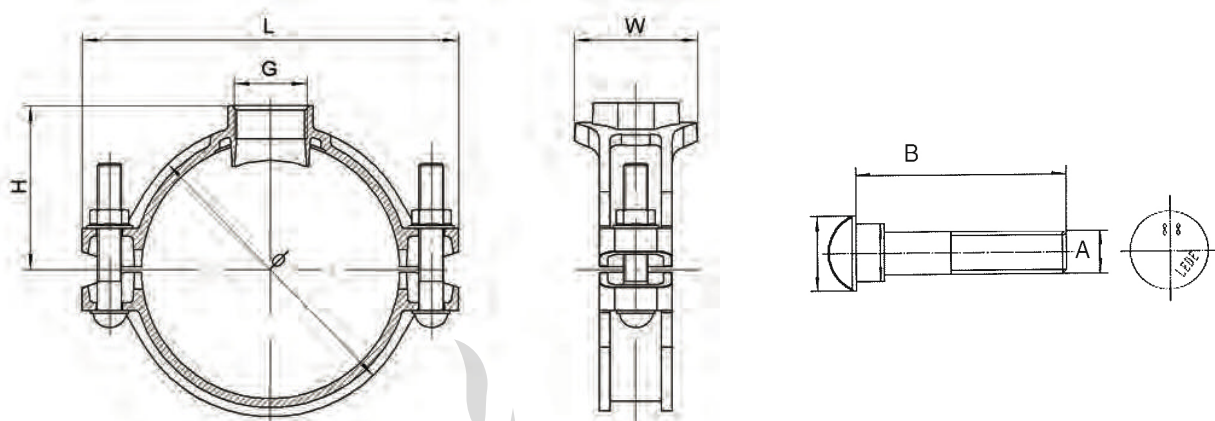
Reference		Size Inch	Nominal dimensions							Hole Cut mm	Bolt Size Dia.*Lg (AXB)	Nuts mm	Socket wrench mm	Bolt Torque N*M	Weight Kg
Red	Dacro		O.D mm	DN mm	L mm	H mm	W mm	Φ mm							
GMGR	GMGG	2"x11/4"	60.3x42.4	50x32	120	70	83	85	46+1	M10x50	21.8	15	75-80	0.73	
GMGR	GMGG	2"x11/2"	60.3x48.3	50x40	120	70	83	85	46+1	M10x50	21.8	15	75-80	0.82	
GMGR	GMGG	2 1/2"x11/4"	76.1x42.4	65x32	139	73	83	100	46+1	M10x60	21.8	18	75-80	0.93	
GMGR	GMGG	2 1/2"x11/2"	76.1x48.3	65x40	139	75	90	100	53+1	M10x60	21.8	18	75-80	1.00	
GMGR	GMGG	3"x11/4"	88.9x42.4	80x32	155	82	83	113	46+1	M10x60	21.8	18	75-80	0.99	
GMGR	GMGG	3"x11/2"	88.9x48.3	80x40	155	82	90	113	53+1	M10x60	21.8	18	75-80	0.97	
GMGR	GMGG	3"x2"	88.9x60.3	80x50	155	82	100	113	64+1	M10x60	21.8	18	75-80	1.38	
GMGR	GMGG	4"x11/4"	114.3x42.4	100x32	181	95.5	72	139	46+1	M12x70	26	18	110-120	1.26	
GMGR	GMGG	4"x1 1/2"	114.3x48.3	100x40	181	95.5	79	139	53+1	M12x70	26	18	110-120	1.37	
GMGR	GMGG	4"x2"	114.3x60.3	100x50	181	95.5	100	140	64+1	M12x70	26	18	110-120	1.63	
GMGR	GMGG	4"x2 1/2"	114.3x76.1	100x65	181	95.5	107	139	80+1	M12x70	26	18	110-120	1.87	
GMGR	GMGG	4"x3"	114.3x88.9	100x80	181	95.5	129	140	92+1	M12x70	26	18	110-120	2.01	
GMGR	GMGG	5"x2"	139.7x60.3	125x50	212	109	100	167.4	64+1	M12x75	26	18	110-120	2.04	
GMGR	GMGG	5"x2 1/2"	139.7x76.1	125x65	212	109	117	167.4	80+1	M12x75	26	18	110-120	2.26	
GMGR	GMGG	6"x 11/4"	168.3x42.4	150x32	248	121	72	194	46+1	M16x85	34.5	24	200-230	2.58	
GMGR	GMGG	6"x 11/2"	168.3x48.3	150x40	248	121	79	194	53+1	M16x85	34.5	24	200-230	2.49	
GMGR	GMGG	6"x2"	168.3x60.3	150x50	239	121	100	196	64+1	M14x85	28	24	135-145	2.39	
GMGR	GMGG	6"x2 1/2"	168.3x76.1	150x65	239	121	117	196	80+1	M14x85	28	24	135-145	2.58	
GMGR	GMGG	6"x3"	168.3x88.9	150x80	239	121	129	196	92+1	M14x85	28	24	135-145	2.73	
GMGR	GMGG	6"x4"	168.3x114.3	150x100	239	122.5	153	196	111+1	M14x85	28	24	135-145	3.52	
GMGR	GMGG	8"x2 1/2"	219.1x76.1	200x65	311	150.5	106	248	80+1	M16x85	34.5	24	200-230	3.46	
GMGR	GMGG	8"x3"	219.1x88.9	200x80	311	147.5	129	248	92+1	M16x85	34.5	24	200-230	3.87	

Each reference comes with a hole cut specification which is attached to the product.

General notes:

- Pressure ratings listed are CWP(cold water pressure) or maximum working pressure within the service temperature range of the gasket used in the coupling. This rating may occasionally differ from maximum working pressure listed and/or approved by UL and/or FM as test working pressure listed and/or approved by UL and/or FM as testing conditions and test pipes differ.
- Maximum working pressures and end loads listed are total of internal and external pressures and loads based on standard weight (ANSI) steel pipe, standard roll or cut grooved accordance with LEDE specifications.
- For one time field test only the maximum joint working pressure may be increased 1-1/2 times the figure shown.
- Warning: piping systems must always be depressurized and drained before attempting disassembly and/or removal of any components.
- LEDE reserves the right to change specifications, designs and/or standard equipment without notice and without incurring any obligations.

Dimensions



THREADED MECHANICAL TEE
GMD

Reference		Size Inch	Nominal dimensions							Hole Cut mm	Bolt Size Dia.*Lg (AxB)	Nuts mm	Socket wrench mm	Bolt Torque N*M	Weight Kg
Red	Dacro		O.D mm	DN mm	L mm	H mm	W mm	Φ mm							
GMDR	GMDG	2"X1 1/4"	60.3x42.4	50x32	120	55	72	85	46+1	M10x50	21.8	15	75-80	0.80	
GMDR	GMDG	2"X1 1/2"	60.3x48.3	50x40	120	63	72	85	46+1	M10x60	21.8	15	75-80	0.88	
GMDR	GMDG	2 1/2"X1 1/4"	76.1x42.4	65x32	139	60	72	99	46+1	M10x60	21.8	15	75-80	0.88	
GMDR	GMDG	2 1/2"X1 1/2"	76.1x48.3	65x40	139	60	79	99	53+1	M10x60	21.8	15	75-80	0.95	
GMDR	GMDG	3"X1"	88.9x33.7	80x25	155	67	46	113	38+1	M10x60	21.8	15	75-80	0.98	
GMDR	GMDG	3"X1 1/4"	88.9x42.4	80x32	155	67	72	113	46+1	M10x60	21.8	15	75-80	1.04	
GMDR	GMDG	3"X1 1/2"	88.9x48.3	80x40	155	67	79	113	53+1	M10x60	21.8	15	75-80	1.12	
GMDR	GMDG	3"X2"	88.9x60.3	80x50	155	67	90	113	64+1	M10x60	21.8	15	75-80	1.11	
GMDR	GMDG	4"X1"	114.3x33.7	100x25	181	79	46	139	38+1	M12x70	26	18	110-120	1.19	
GMDR	GMDG	4"X1 1/4"	114.3x42.4	100x32	181	79	72	139	46+1	M12x70	26	18	110-120	1.26	
GMDR	GMDG	4"X1 1/2"	114.3x48.3	100x40	181	79	79	139	53+1	M12x70	26	18	110-120	1.31	
GMDR	GMDG	4"X2"	114.3x60.3	100x50	181	79	90	139	64+1	M12x70	26	18	110-120	1.37	
GMDR	GMDG	4"X2 1/2"	114.3x76.1	100x65	181	81	107	139	80+1	M12x70	26	18	110-120	1.51	
GMDR	GMDG	6"X1 1/4"	168.3x42.4	150x32	239	106	83	196	46+1	M14x85	28	21	135-145	2.01	
GMDR	GMDG	6"X1 1/2"	168.3x48.3	150x40	239	106	90	196	53+1	M14x85	28	21	135-145	1.93	
GMDR	GMDG	6"X2"	168.3x60.3	150x50	239	106	100	196	64+1	M14x85	28	21	135-145	2.20	
GMDR	GMDG	6"X2 1/2"	168.3x76.1	150x65	239	106	117	196	80+1	M14x85	28	21	135-145	2.34	

Each reference comes with a hole cut specification which is attached to the product.

General notes:

- Pressure ratings listed are CWP(cold water pressure) or maximum working pressure within the service temperature range of the gasket used in the coupling. This rating may occasionally differ from maximum working pressure listed and/or approved by UL and/or FM as test working pressure listed and/or approved by UL and/or FM as testing conditions and test pipes differ.
- Maximum working pressures and end loads listed are total of internal and external pressures and loads based on standard weight (ANSI) steel pipe, standard roll or cut grooved accordance with LEDE specifications.
- For one time field test only the maximum joint working pressure may be increased 1-1/2 times the figure shown.
- Warning: piping systems must always be depressurized and drained before attempting disassembly and/or removal of any components.
- LEDE reserves the right to change specifications, designs and/or standard equipment without notice and without incurring any obligations.